

CP1212 12V 1.2Ah(20hr)

The rechargeable batteries are lead-lead dioxide systems. The dilute sulfuric acid electrolyte is absorbed by separators and plates and thus immobilized. Should the battery be accidentally overcharged producing hydrogen and oxygen, special one-way valves allow the gases to escape thus avoiding excessive pressure build-up. Otherwise, the battery is completely sealed and is, therefore, maintenance-free, leak proof and usable in any position.



Battery Construction

| | | | | | | | | |
|--------------|----------------|----------------|-----------|-------|--------------|----------|------------|---------------|
| Component | Positive plate | Negative plate | Container | Cover | Safety valve | Terminal | Separator | Electrolyte |
| Raw material | Lead dioxide | Lead | ABS | ABS | Rubber | Copper | Fiberglass | Sulfuric acid |

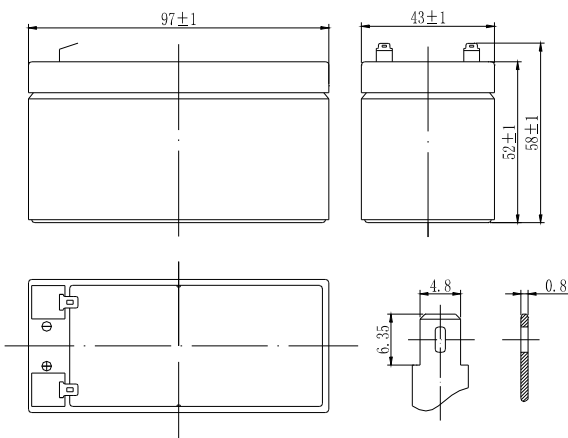
General Features

- Absorbent Glass Mat (AGM) technology for efficient gas recombination of up to 99% and freedom from electrolyte maintenance or water adding.
- Not restricted for air transport-complies with IATA/ICAO Special Provision A67.
- UL-recognized component.
- Can be mounted in any orientation.
- Computer designed lead, calcium tin alloy grid for high power density.
- Long service life, float or cyclic applications.
- Maintenance-free operation.
- Low self discharge.

Dimensions and Weight

| | |
|--------------------------|-------------|
| Length(mm / inch) | 97 / 3.82 |
| Width(mm / inch) | 43 / 1.69 |
| Height(mm / inch) | 52 / 2.05 |
| Total Height(mm / inch) | 58 / 2.28 |
| Approx. Weight(Kg / lbs) | 0.53 / 1.17 |

* Weight deviation: ± 5%



Performance Characteristics

| | |
|--|--------------|
| Nominal Voltage | 12V |
| Number of cell | 6 |
| Design Life | 5 years |
| Nominal Capacity 77°F(25°C) | |
| 20 hour rate (0.06A, 10.5V) | 1.2Ah |
| 10 hour rate (0.117A, 10.5V) | 1.17Ah |
| 5 hour rate (0.23A, 10.5V) | 1.15Ah |
| 1 hour rate (0.89A, 9.6V) | 0.89Ah |
| Internal Resistance | |
| Fully Charged battery 77°F(25°C) | ≤ 55mOhms |
| Self-Discharge | |
| 3% of capacity declined per month at 20°C(average) | |
| Operating Temperature Range | |
| Discharge | -20~60°C |
| Charge | -10~60°C |
| Storage | -20~60°C |
| Max. Discharge Current 77°F(25°C) | 18A(5s) |
| Short Circuit Current | 60A |
| Charge Methods: Constant Voltage Charge 77°F(25°C) | |
| Cycle use | 2.40-2.45VPC |
| Maximum charging current | 0.48A |
| Temperature compensation | -30mV/°C |
| Standby use | 2.23-2.30VPC |
| Temperature compensation | -20mV/°C |

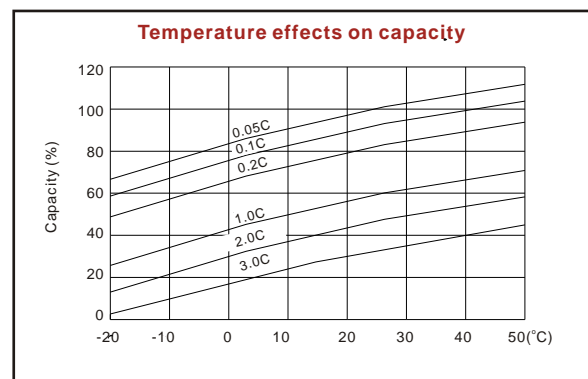
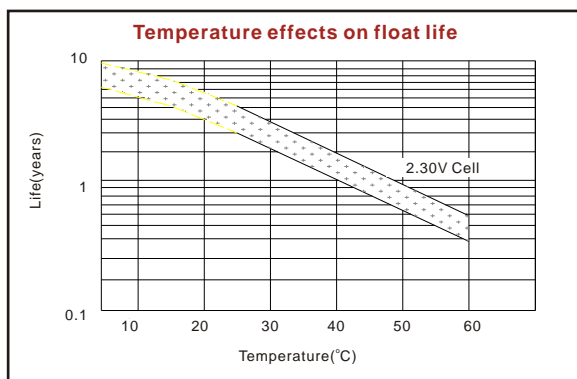
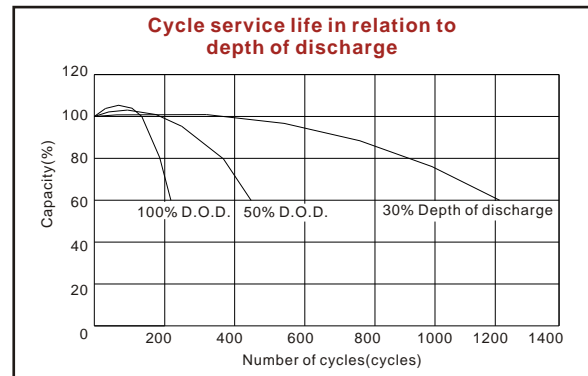
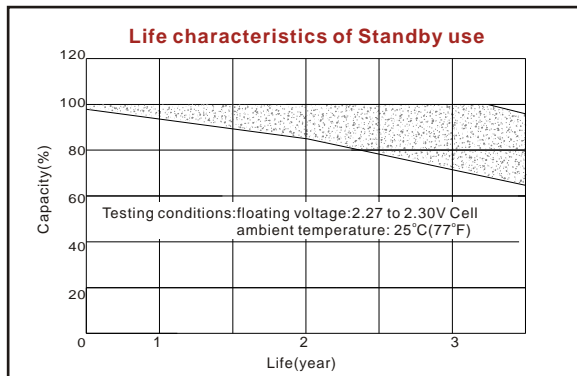
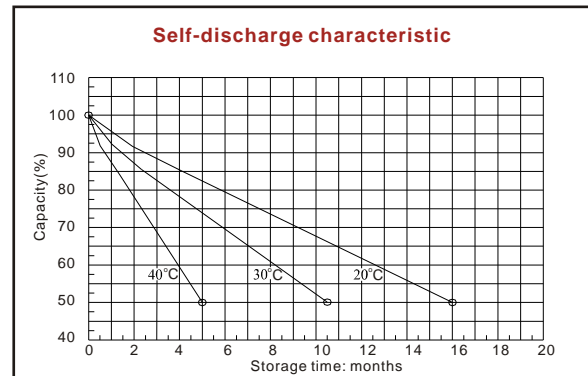
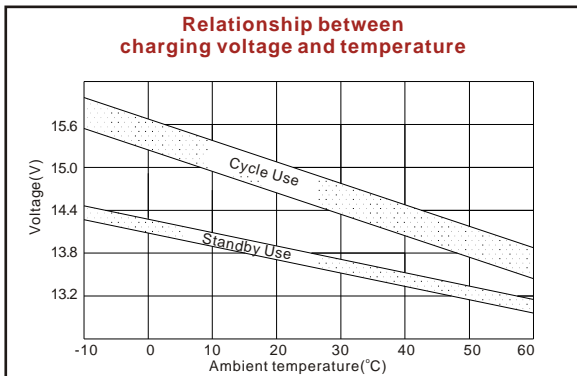
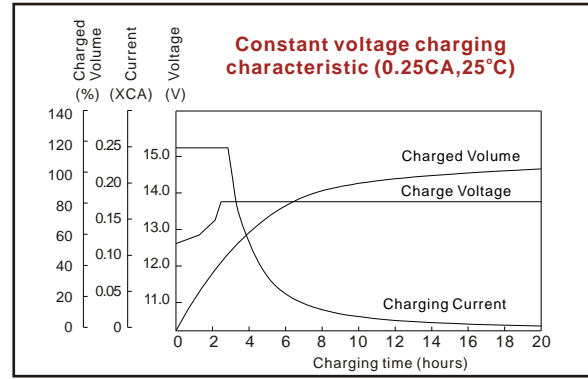
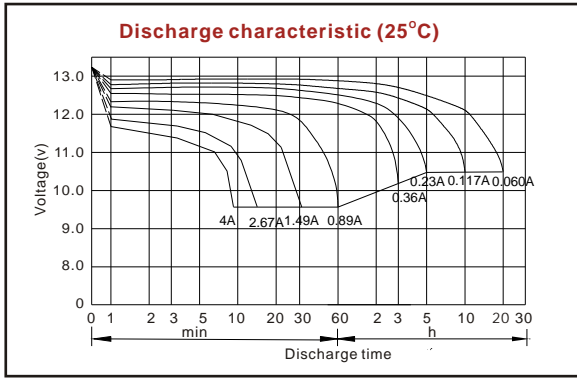
Discharge Constant Current (Amperes at 77°F25°C)

| End Point Volts/Cell | 5min | 10min | 15min | 30min | 1h | 3h | 5h | 10h | 20h |
|----------------------|------|-------|-------|-------|------|------|------|-------|-------|
| 1.60V | 5.72 | 3.85 | 2.67 | 1.49 | 0.89 | 0.39 | 0.25 | 0.129 | 0.065 |
| 1.65V | 5.42 | 3.66 | 2.55 | 1.43 | 0.86 | 0.37 | 0.24 | 0.125 | 0.064 |
| 1.70V | 5.12 | 3.48 | 2.43 | 1.36 | 0.83 | 0.36 | 0.24 | 0.120 | 0.064 |
| 1.75V | 4.80 | 3.28 | 2.31 | 1.30 | 0.79 | 0.34 | 0.23 | 0.117 | 0.060 |
| 1.80V | 4.48 | 3.08 | 2.18 | 1.23 | 0.76 | 0.33 | 0.22 | 0.115 | 0.060 |

Discharge Constant Power (Watts at 77°F25°C)

| End Point Volts/Cell | 5min | 10min | 15min | 30min | 1h | 3h | 5h | 10h | 20h |
|----------------------|------|-------|-------|-------|------|------|------|-------|-------|
| 1.60V | 9.90 | 6.24 | 5.14 | 2.94 | 1.79 | 0.73 | 0.50 | 0.257 | 0.130 |
| 1.65V | 9.28 | 5.87 | 4.85 | 2.78 | 1.72 | 0.72 | 0.49 | 0.253 | 0.127 |
| 1.70V | 8.67 | 5.51 | 4.58 | 2.64 | 1.64 | 0.69 | 0.48 | 0.249 | 0.124 |
| 1.75V | 8.06 | 5.15 | 4.29 | 2.49 | 1.56 | 0.67 | 0.47 | 0.245 | 0.121 |
| 1.80V | 7.47 | 4.79 | 4.00 | 2.33 | 1.47 | 0.66 | 0.46 | 0.240 | 0.113 |

(Note)The above characteristics data are average values obtained within three charge/discharge cycles not the minimum values. All data shall be changed without notice, Vision reserves the right to explain and update the information contained hereinto.



ISO9001:2008

MH25860

G4M19906-9202-E-16

www.vision-batt.com

Shenzhen Center Power Tech. Co., Ltd.
 Center Power Industrial Park, Tongfu Industrial District Dapeng Town, 518120 Shenzhen, China
 Tel: (+86-755) 8431 8088 Fax: (+86-755) 8431 8038 E-mail: sales@vision-batt.com